

Metal roofing & Metal Siding Color Options



Shiny Black



Black



Charcoal



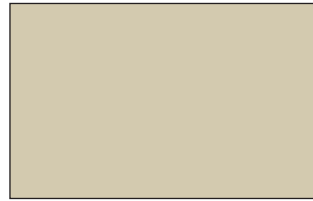
Gray



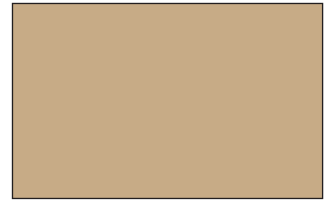
Bright White



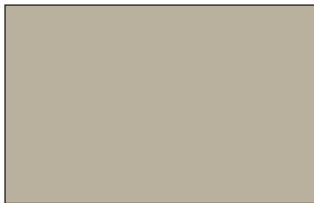
White



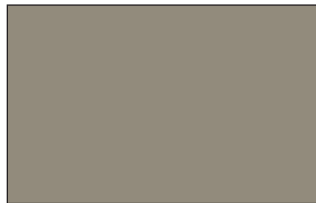
Ivory



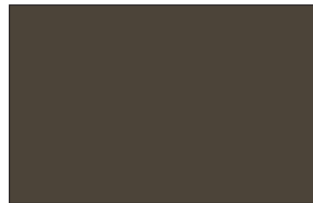
Tan



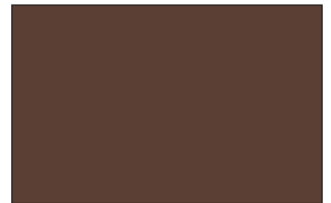
Stone



Clay



Burnished Slate



Brown



Red



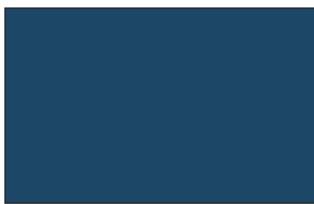
Dark Red



Crimson Red



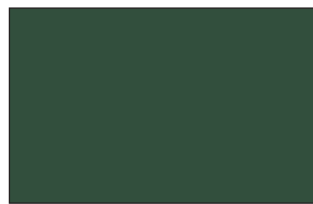
Burgundy



Gallery Blue



Blue



Evergreen



Hartford Green



Copper



Galvalume

CERAM-A-STAR® 1050

Ceram-A-Star® is a registered trademark of AkzoNobel.

The colors shown are intended only as an approximation of actual colors. Exact color chips can be supplied if required. Color prices may vary. Call to check on availability of colors for 26 gauge.

The colors shown are intended only as an approximation of actual colors. Exact color chips can be supplied if required. Color prices may vary. Call to check on availability of colors for 26 gauge.



192 Bruck Drive
Sparta TN, 38583

bruckcontractors.com
Licensed and Insured

(615) 378-8828

Metal roofing & Metal Siding Color Options



Black



* Shiny Black



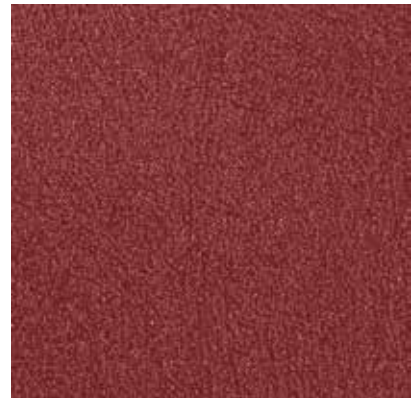
Charcoal



Burnished Slate



Evergreen



Dark Red



Burgundy



* Bright White

CERAM-A-STAR[®]
1050 Frost

Ceram-A-Star[®] is a registered trademark of AkzoNobel.

The colors shown are intended only as an approximation of actual colors. Exact color chips can be supplied if required. Color prices may vary. Call to check on availability of colors for 26 gauge.



192 Bruck Drive
Sparta TN, 38583

bruckcontractors.com
Licensed and Insured

(615) 378-8828

Metal roofing & Metal Siding Color Options



Cedar Aged



Cedar Gray



Cedar Natural



Hickory Natural



Stone Smoke



Stone Ash



Realtree® EDGE

The colors shown are intended only as an approximation of actual colors. Exact color chips can be supplied if required. Color prices may vary. Call to check on availability of colors for 26 gauge.



192 Bruck Drive
Sparta TN, 38583

bruckcontractors.com
Licensed and Insured

(615) 378-8828